



Genesis

For the Perfect Finish



Infill Kit

The **complete solution** for invisible, stress relieving grout lines



When movement joints are required but the tile design mean unattractive cuts INVIZI-JOINT is the solution.

Colour match your grout or any RAL number to provide an even more seamless finish compared to standard joints.

Coverage: 15m based on 10mm x 3mm joint

Contents:

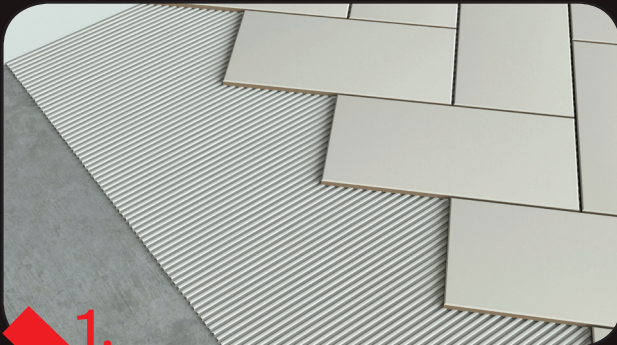
- Part 1 Base
- Part 2 Hardener
- Pair of Gloves
- x2 Empty Cartridges
- x2 End Caps
- x2 Nozzles





The **complete solution** for invisible, stress relieving grout lines

Installation Instructions



1.

Install tiles in your preferred pattern. Complete grout application leaving grout lines clear as required. Use the Primer / Sealant on all porous tiles.



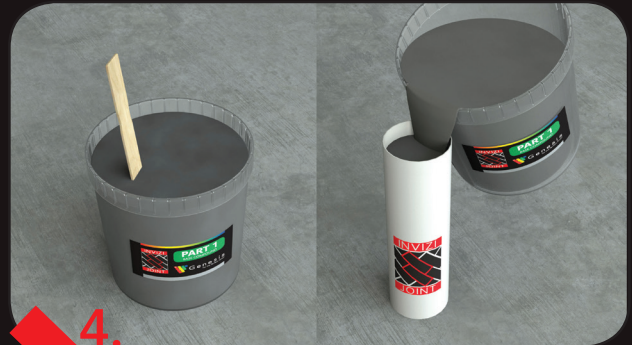
2.

INVIZI-JOINT Kit comprising of Part 1 Base, Part 2 Hardener, Cartridge assembly and protective gloves. Use the protective gloves provided.



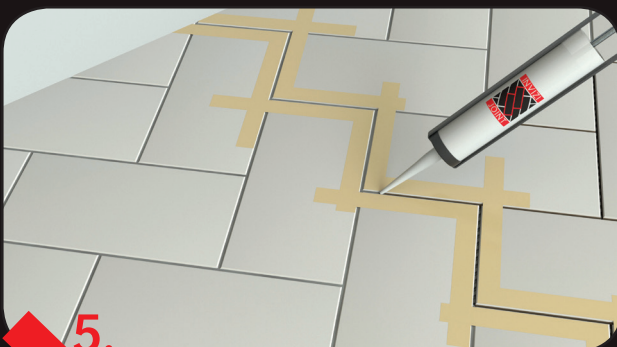
3.

Pour INVIZI-JOINT Part 2 into Part 1 and mix thoroughly until a consistent colour is reached.



4.

Carefully pour the mixture into a cartridge. Place end cap into cartridge and after carefully trimming the threaded end of the cartridge apply the nozzle and snip the end to suit the width of your grout line.



5.

Using gentle pressure, carefully apply the INVIZI-JOINT material into the open grout line. (You may find it convenient to apply masking tape to the sides of the grout line if unsure of accuracy). Ensure the INVIZI-JOINT material is filled level to the surrounding grout level. Check and top up if the level drops



6.

After application INVIZI-JOINT material will cure over a period of approximately 4 hours.

Surplus material can be carefully removed before fully curing with a cloth or paper towel dampened with acetone, (nail varnish remover).



The ***complete solution*** for invisible, stress relieving grout lines

What You Need To Know

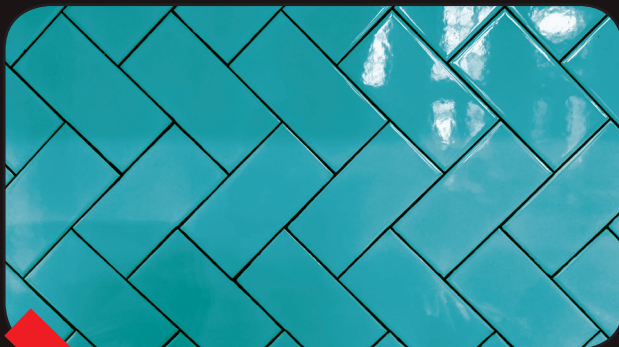
How INVIZI-JOINT benefits your tiled flooring

Heated floors have become more effective and popular. Rigid hard floors must be protected from expansion and contraction. Tension and stress can be very damaging to the tiled surface. INVIZI-JOINT infills are an effective way of easing this situation. Traditional movement joints can be obtrusive and disruptive in the floor surface. INVIZI-JOINT easily replaces the grout lines between tiles as a perfect colour match.

- ❖ Effective stress relief for tile and natural stone on heated floors
- ❖ Unobtrusive and colour matched
- ❖ Combines with existing grout lines for a discreet appearance
- ❖ Can follow brick bond and opus pattern
- ❖ INVIZI-JOINT has an approximate 45 Shore A hardness rating when cured

INVIZI-JOINT must not be used as a substitute for structural movement joints.

The guide lines for this type of junction can be found within the British Standard 5383 and the Tile Associations various publications. Generally these joints comprise a central flexible section supported on both sides with metal profiles. They must be located directly in line with and over any pre-existing joints in the sub floor construction. If any such joints exist please consult our technical department before installing INVIZI-JOINT.



Tiled flooring layout



INVIZI-JOINT pathway

PERFECT FOR:

- ❖ Opus, Brick & Herringbone Patterned Tiles
- ❖ Avoiding cracked and damaged tiles
- ❖ Large living areas
- ❖ Use with underfloor heating

