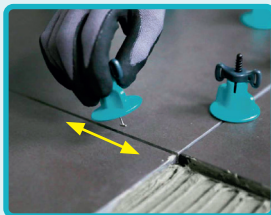
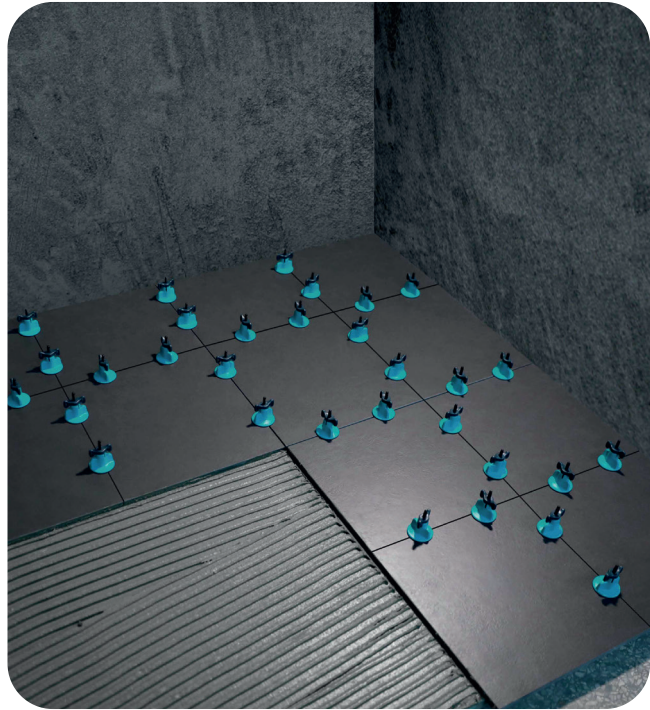
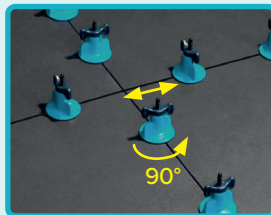


T-Spin

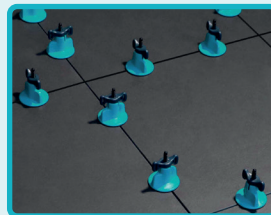
- Holds walls and floors tiles level & eliminates lippage
- Anti-scratching large cap for protecting your tiles and fast spin-down handle, no tools needed anymore.
- Stainless steel 1.5mm T pin and the product is fully washable and reusable, saves both time and money
- Suitable for tile clearance 1.5-6mm, for a wider joint, use classic spacers together
- Used in conjunction with other levelling systems as well
- Suitable for 2-17mm tiles



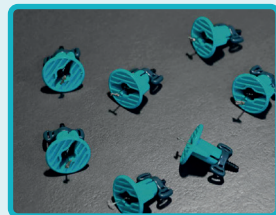
Insert T-pin parallel into the grout joint (for a wider joint, use in conjunction with classic spacers)



Hold the blue cap in 90° position and spin down the gray handle



Twist the gray handle down to the required level (no tools needed)



Return parallelly back to 90° to the grout joint for reuse (Note: remove within 24 hrs)

