

Large Format

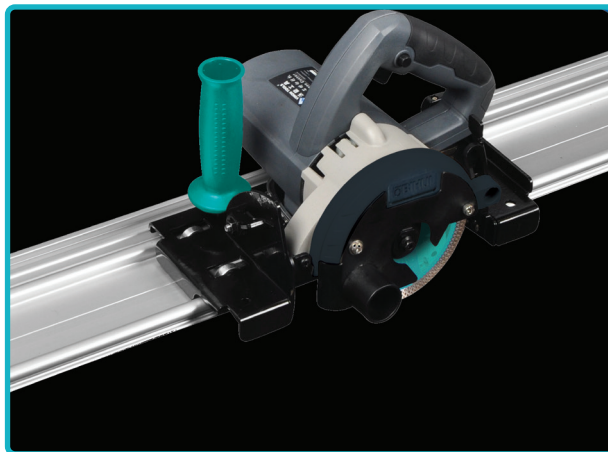
Manual Rail Cutting System

For manual cutting of large format tiles with thicknesses between 3-6mm.

Packed in plastic case and tool bag, this 3 rail system has a cutting ability of up to 3.6m.

System includes:

- 3 x Rails (1.4m + 1.4m + 0.8m)
- 1 x Cutting head with carbide wheel assembled
- 1 x Spare wheel in box
- 3 x Aluminum fixing suction cup
- 2 x F clamp for fixing the rail
- 1 x Breaking clamp
- 1 x Breaking nipper
- Comes in plastic case and storage tool bag



BU-LFMCS BIHUI Manual Tile Cutter for Large Format Tiles – Rails not included
BLFMCR Manual cutting system (BU-LFMC x 1 & BU-LFRS x 1)

Electric Cutter

An electric dry cutter compatible with the above rail system for large format tiles.

- 1500W, 220V
- 13000rpm
- Max. cutting depth 14mm

BU-LFECMR Electric Tile Cutter for Large Format Tiles – Rails not included

